



i-house

appliance centre

Where Quality Counts

Providing you with stylish,
quality appliances that will
give you years of enjoyment.

A CHADWICKS
GROUP



COMPANY

ILVE...

Built with an exceptionally high level of detail, reliability and functionality. ILVE have one of the largest selection of Range Cookers on the market with sizes from 60cm all the way up to the mighty 150cm.

... RANGE COOKERS



EVERHOT...

The energy efficient traditional cooking range, with its hand-crafted good looks and quality cooking, epitomises a relaxed, homely lifestyle in town or country. Designed to provide both cooking and room heat. You can bake, roast, slow cook and grill to perfection providing gentle background heat for open plan living.



RANGEMASTER...

One of Europe's best loved range cooker brand. The world's first range cooker was made by Rangemaster in 1830 on the very same site in Royal Leamington Spa where they continue to design and manufacture all their 90,100 and 110cm range cookers. Range cookers are at the heart of more homes than any other, helping to create memorable family moments. Rangemaster cookers are the essential ingredient to a perfect kitchen.



SIEMENS ...

Bringing cutting-edge technology into the kitchen with WiFi enabled Siemens Home Connect. Enjoy cooking your favourite dishes with its latest selection of innovative multi-function, electric, combination and steam ovens.

...OVENS



WOLF...

Built to serve your household for decades. When it comes to building ovens, Wolf make no compromises with their state of the art technology. Bake, roast, and broil with the confidence of Wolf built-in ovens. Wolf convection ovens, or combination ovens with convection and steam, offer intuitive controls and consistent temperatures to ensure every meal is predictably remarkable.



VZUG...

These ovens have been designed to make sure that every process is as easy as possible. Thanks to their equipment and exquisite materials, all cooking and baking is fun, even the cleaning up afterwards. The EasyCook functions provide tips on settings for the right operating mode. The GourmetGuide offers easy preparation thanks to automatic programmes. Effortless cleaning with pyrolysis and sophisticated materials. Developed and manufactured in Switzerland.

...HOBS

MIELE...

The TwoInOne brings together exceptional technology with PowerFlex cooking zones and an automatic extractor with intuitive operation. The TwoInOne overcomes many challenges when planning a kitchen. This hob is incredible for speed and precise control.





SMEG...

Utilising cutting-edge technology and constructed only using premium materials including stainless steel, glass, and cast iron (pan stands). Smeg's extensive range of hobs comprises gas, ceramic, induction and electric models, which are available in a choice of sizes and finishes to co-ordinate perfectly with Smeg built-in ovens. The ultra-low gas hob is sleek and stylish with a dull flame. Taste the flavour of a 4KW burner!



VZUG...

If you are looking to cook like a professional in the kitchen, creating varied and versatile dishes, then V-ZUG has the ideal combination of appliances for you. The wok and the Teppan Yaki, as well as the induction hob, can be easily combined and built into your kitchen. The Fusion hob includes an integrated hob hood, which draws down vapors directly next to your pans. And thanks to the OptiLink function, the hob hood and the hob can communicate with each other to function completely automatically. This is sure to be a firm favorite with anyone who appreciates plenty of headroom when cooking and intuitive touch controls on the graphic display.

...EXTRACTION TECHNOLOGY

SIEMENS...

Induction cooktop with integrated ventilation unit. FlexInduction adapts the cooking zones to different size cookware – for more flexibility. PowerMove Plus enables intuitive control thanks to three heating zones with different temperatures, just by moving the pan.





FALMEC...

Offering discreet and silencing hoods, allowing you to work, study, chat and listen to music while cooking, without interference.

The technology maintains excellent extraction performance with minimal visual impact, suitable for open spaces where the kitchen area integrates with ceiling space.

QUOOKER...

The tap that does it all hot, cold, boiling 100c, filtered, chilled and sparkling water. With a Quooker in your home, everything goes faster. A truly revolutionary technology that is very economical.

...TAPS



GROHE...

GROHE taps fuse the latest designs with a host of features that bring real benefits to your kitchen. Exciting designs are matched by exceptional product features, to make time spent at the kitchen sink, a joy, rather than a chore.

COOLING ... TECHNOLOGY



LIEBHERR...

Versatile, innovative and integrates perfectly. Available in a large variety of sizes to suit your space. This Liebherr Pantry Fridge/Freezer has a framed door concept with BioFresh technology, LED lighting and an automatic ice-maker in the freezer.



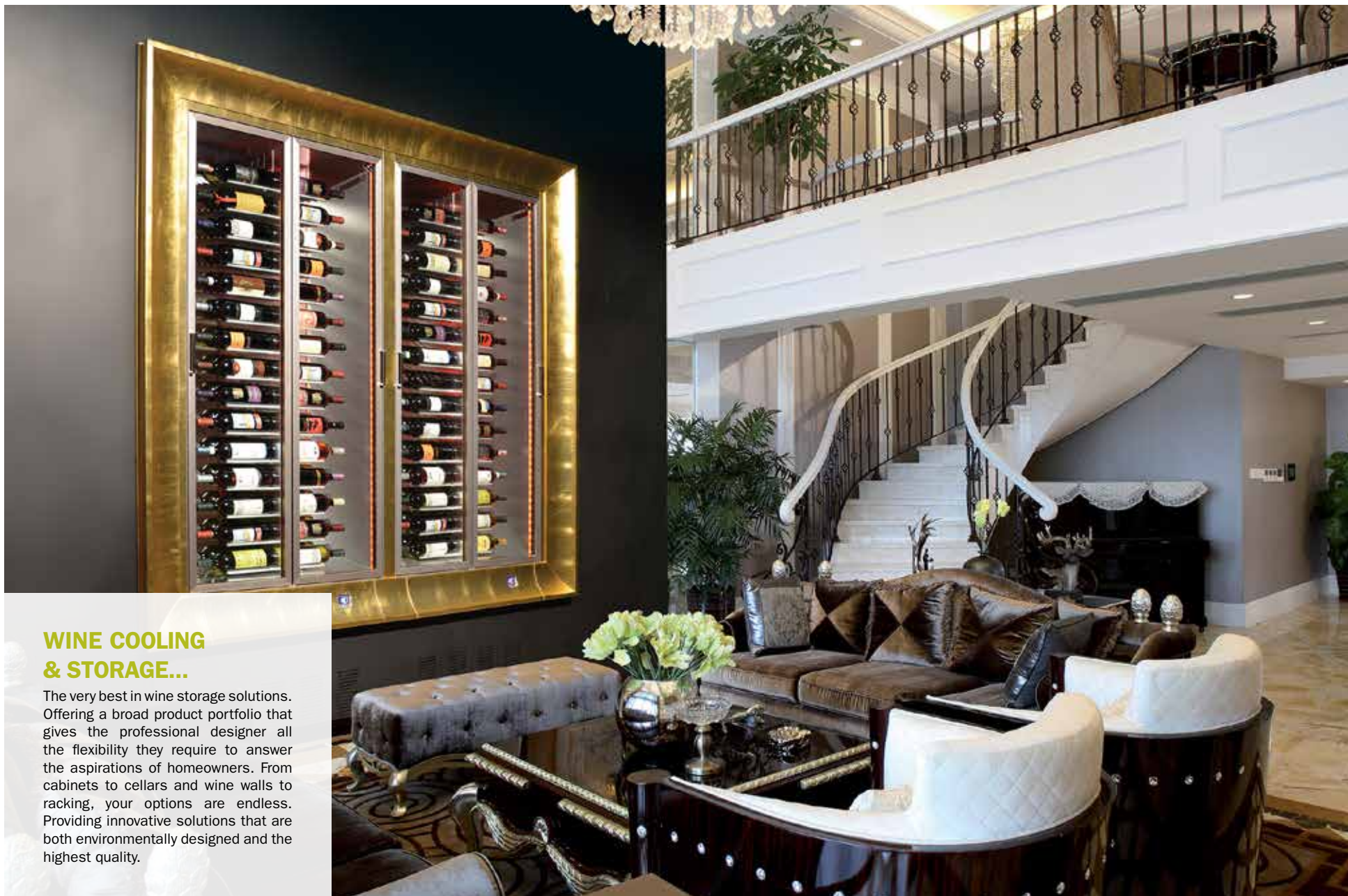


SUB-ZERO...

Famous for their advanced food preservation technology. Refrigerators are built-in for a precise, custom fit within surrounding cabinetry in your home. With both stainless steel and panel-ready finishes available, along with nearly limitless configurations, Sub-Zero offers true design flexibility to complement, anchor, or disappear completely into your décor.

WINE COOLING & STORAGE





WINE COOLING & STORAGE...

The very best in wine storage solutions. Offering a broad product portfolio that gives the professional designer all the flexibility they require to answer the aspirations of homeowners. From cabinets to cellars and wine walls to racking, your options are endless. Providing innovative solutions that are both environmentally designed and the highest quality.





CORNER FRIDGES...

Utilise awkward storage spaces in your kitchen with the Corner Fridge solution. This refrigeration integrates into any style of kitchen furniture and with its impressive 1,300L capacity enables it to provide a central source for an entire households food and drink requirements. The air circulation technology minimalises food waste by keeping food fresher for longer, and has A+ energy efficiency.



...ECO WASTE DISPOSAL

INSINKERATOR...

New technological advancements in water efficiency and noise reduction in newer waste-disposal units have now made it a viable option for Irish households, reaping many benefits for the environment. The InSinkerator Evolution breaks down food waste using a built-in grind chamber and washes the waste down the drain resulting in only tiny particles which can be easily processed by local water treatment centres.



MIELE...

The ultimate efficiency brand for Dishwashers. Using only fresh mains water, this feature has reduced water consumption by 85% over the last 30 years. Electricity consumption is also reduced to an all-time low with the ECO-programme, achieving energy consumption values of only 0.83 kw/h.



NEFF...

The renowned brand for quality dishwashers. Designed to be completely invisible behind your chosen cabinetry, Neff dishwashers are incredibly quiet, yet packed with ideas to make cleaning as effortless and efficient as possible, with Chef 70° to get rid of the most stubborn stains.

...LAUNDRY



MIELE...

Invest in quality, durability and innovative features. Miele test their appliances to last the equivalent of 20 years' use, which means many happy years of reliable service.



SIEMENS...

Designed to make your laundry day as easy as possible. Each Siemens washing machine will save you time and energy with a variety of programmable functions and load capacities that are ideal when it comes to your specific needs.



VZUG....

The V-ZUG RefreshButler cares perfectly for delicate fabrics, by neutralising unwanted odours. Clothes are dried gently and refreshed with steam, thanks to the hygiene programme - removing 99.99% of all bacteria and germs. In addition, the anti-crease function significantly reduces creases from wear. Dries up to 5 kg laundry gently without any physical movement. Appliances can be free-standing or integrated into a cupboard. Developed and manufactured in Switzerland.

Your destination for premium appliances...



In-House Appliance Centre is part of Irish-founded, Chadwicks Group, Ireland's leading builders merchants which operates with 50 stores across the country. Geraldine O'Donoghue, a well-known and long established appliance expert, joined the business in 2010 to manage the In-House Appliance Centre brand based inside The Panelling Centre showroom at Deansgrange Business Park, Co. Dublin.

In-House Appliance Centre is committed to providing the most innovative, premium quality and energy efficient appliances. The Showroom has a huge range of top end brands on display, such as: VZUG, Wolf, Sub-Zero, Ilve, Siemens, Neff, Smeg, Miele, La Canche, Quooker, Grohe, Liebherr and endless options available on custom-order!

Commenting on the latest appliance trends that are here to stay, Geraldine said: "It's very interesting to see the trends which are appearing in kitchen appliances and how they reflect a societal shift in values about the environment, nutrition and space. When you've been in the business as long as I have, you come across the wackiest and most wonderful trends, but I can tell which ones are here to stay. When it comes to integrated appliances, combination steam cooking and effective waste disposal, these are the trends I would recommend my customers to invest in. I have decades of experience in premium appliances and as I always say, you wouldn't expect a perfect cake from a poor-quality baking tin so don't scrimp on kitchen equipment - it's the best investment you'll ever make."

For experienced advice and guidance to help you choose the most suitable appliances for your home or building project, make an appointment with Geraldine at geraldine.odonoghue@in-house.ie or call **01 268 6996 (select option 4)**. You can be assured of her best attention by recommending the most appropriate models from our entire offering, giving you the best price to match your needs.

in-house
appliance centre

Where Quality Counts